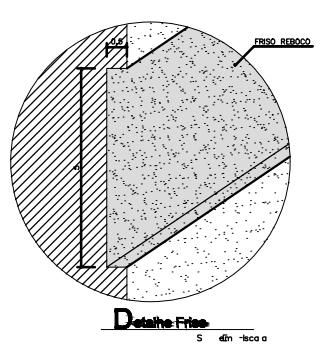
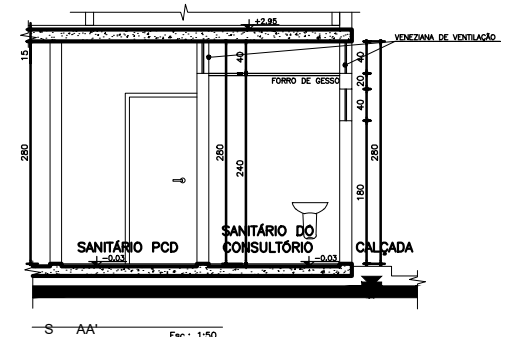
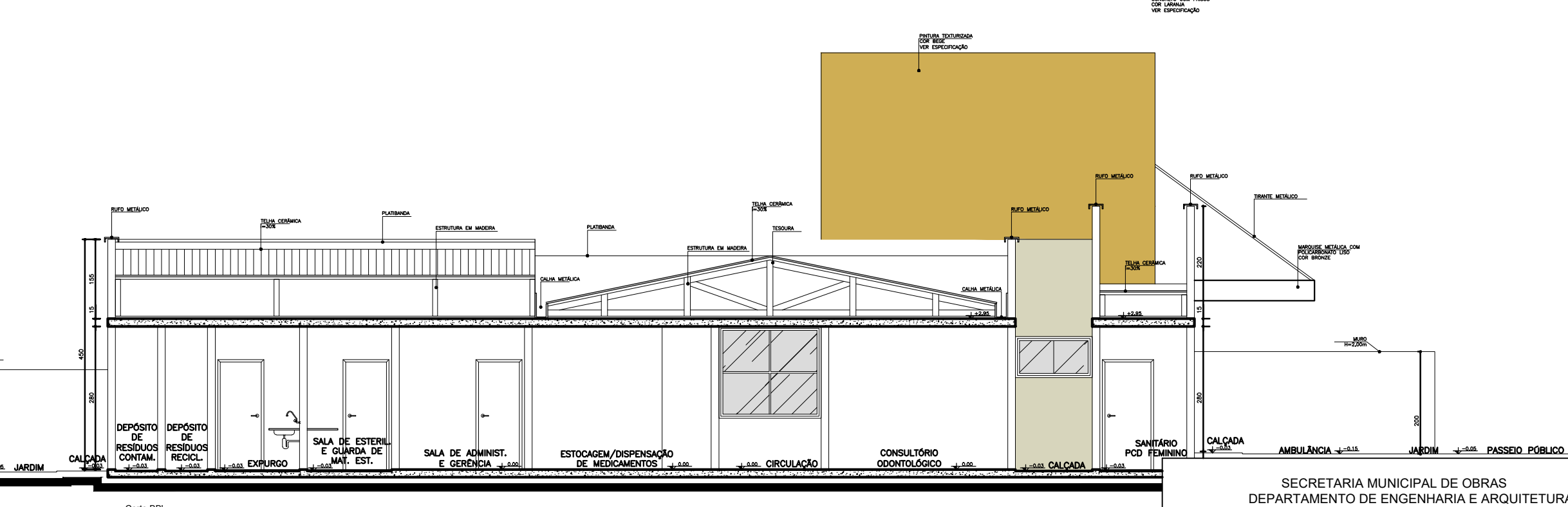
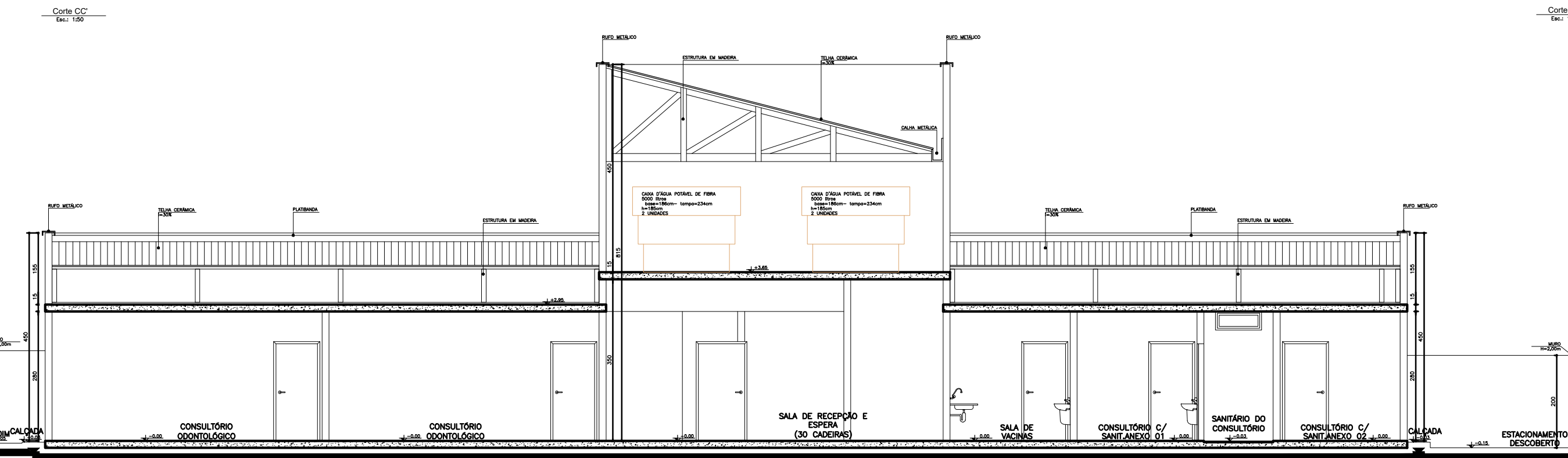
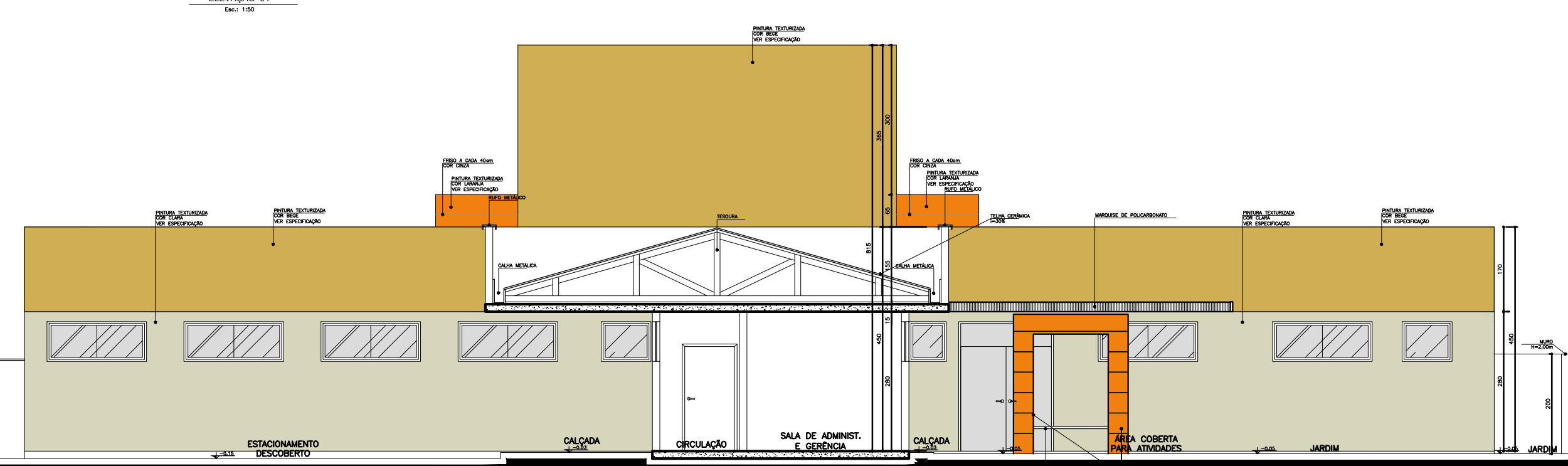
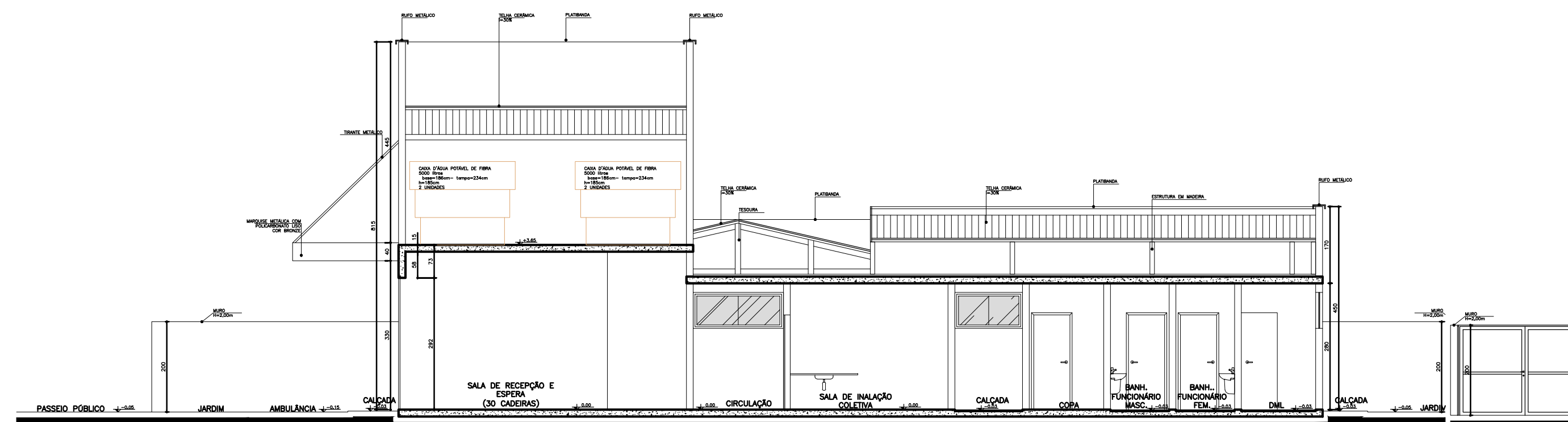
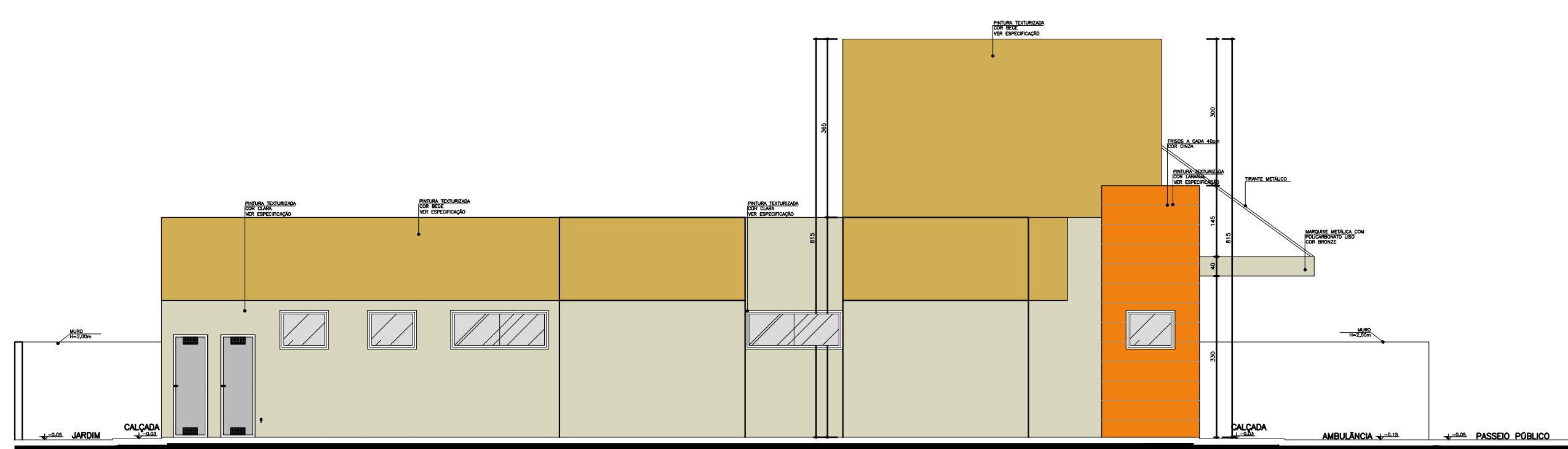
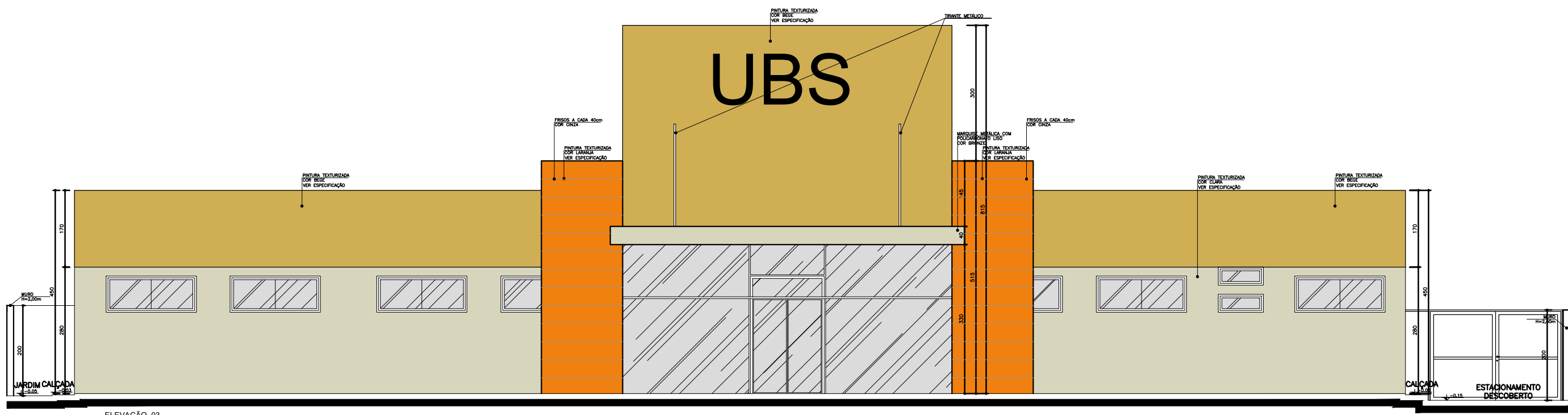
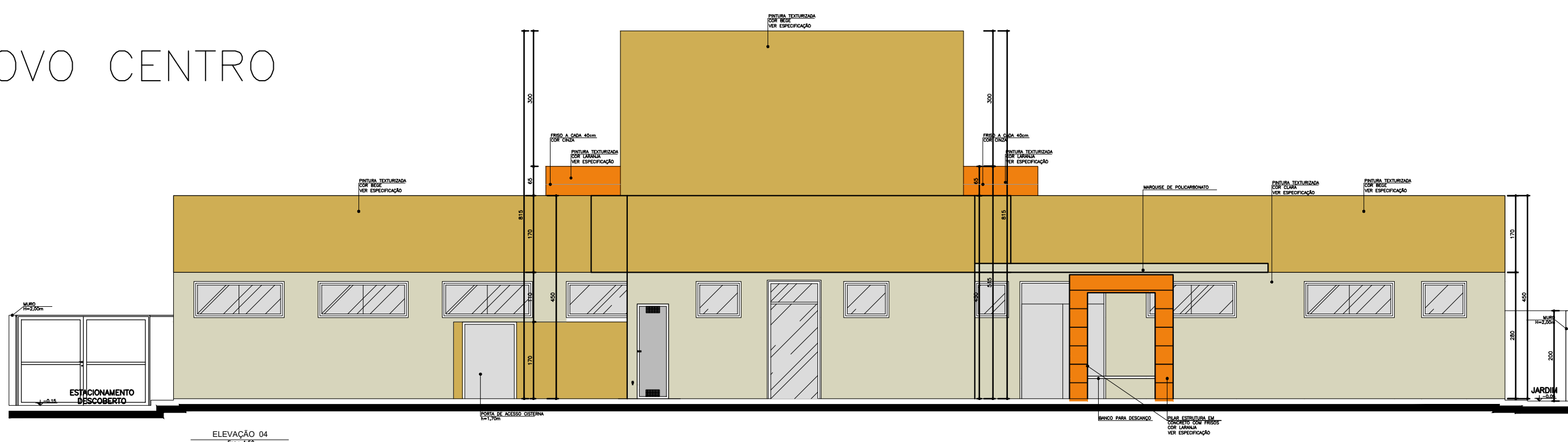
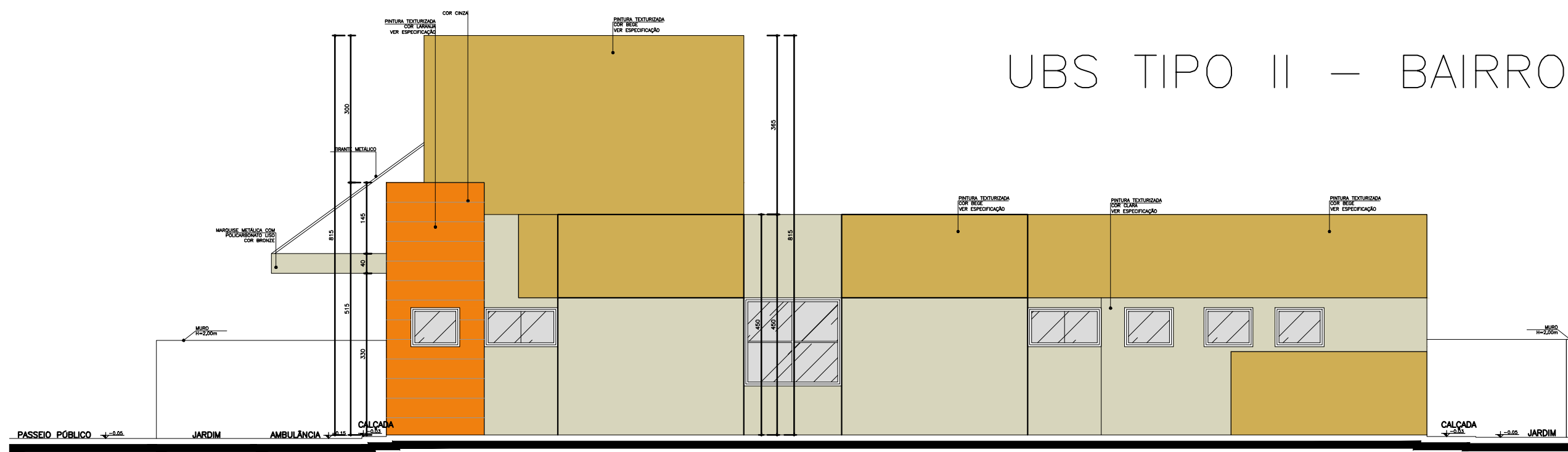


UBS TIPO II – BAIRRO NOVO CENTRO



E – Cor da Fachada

- Cor Verde: Fachada lateral, cor verde.
- Cor Amarelo: Fachada lateral, cor amarelo.
- Cor Branco: Fachada lateral, cor branco.

NOTA: A cor da fachada lateral é verde, amarelo e branco. A cor da fachada lateral é verde, amarelo e branco. A cor da fachada lateral é verde, amarelo e branco.

SECRETARIA MUNICIPAL DE OBRAS DEPARTAMENTO DE ENGENHARIA E ARQUITETURA		PROJETO ARQUITETÔNICO		Data: JUNHO/2021	
SECRETÁRIO DE OBRAS:	BRUNO MARCO MOREIRA ALMEIDA	RESPONSÁVEL TÉCNICO:	RODRIGO DE PAULA OLIVEIRA	Folha:	04/15
ENDEREÇO:	AVENIDA HELENA SOARES VIANA, COM MG 20, BAIRRO NOVO CENTRO, CIDADE DE SANTA LUZIA, MG.				
		cortes e elevações		Revisão:	